

Handheld Slit Lamp SL1911E



Boutique is made by craftsmanship

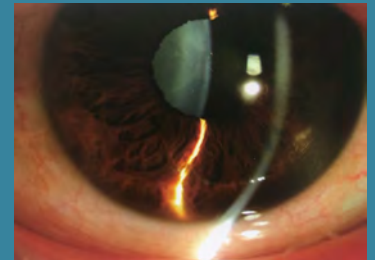
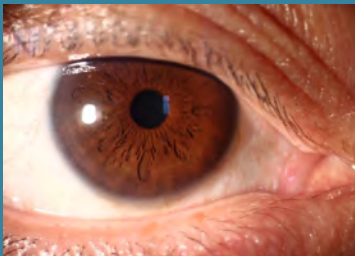
Specifications

Microscope

Microscope type	Converging Microscope
Objective Magnification	Two steps Magnification
Magnifications	10X,16x

Illumination Assembly

Slit Width	0.15mm,0.5mm,0.8mm and 1.6mm slits, 12mm circle and a 1mm square
Slit Angle	+/-60°
Filters	Redfree,Blue , Neutral dsensity 0.8 and Clear
Illumination Source	4V 500mA LED
Power Supply	
Input	AC 110/220V \pm 10% 50Hz/60Hz
Output	12.0V DC 2.0A
Power Consumption	7.4V 1600mAH rechargeable Li battery
Net Weight	800g



The SL1911E Slit Lamp is the only Handheld Slit Lamp intended for use in eye examination of the anterior eye segment , from the cornea epithelium to the posterior capsule.It is used to aid in the diagnosis of diseases or trauma which affect the structural properties of the anterior eye segment.
